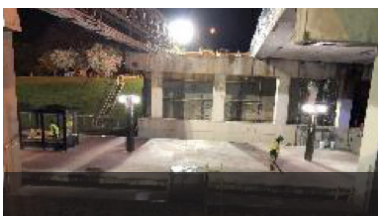
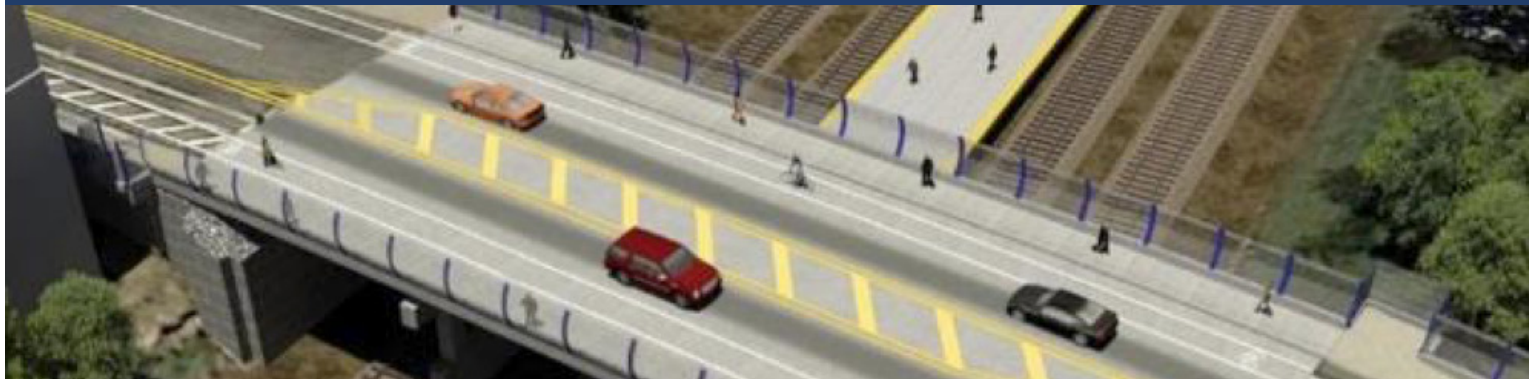
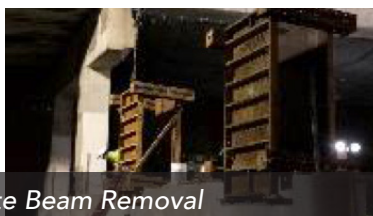


Reconstruction of Monroe Street NE Bridge

Spring 2018 Update



Pier and Concrete Beam Removal



PROJECT UPDATE

DDOT would like to thank you for your engagement over the past several weeks.

We have decided not to propose a full multi-week closure of the bridge this summer.

There are three primary reasons for our decision.

1. We have been unable to secure CSX flagging to allow us to work 24/7. We do anticipate being able to work 12-hour shifts, and anticipate shifting most work from night-time to daytime.
2. With a 12-hour shift, we will accelerate the work, but would not be able to complete the north side of the bridge and reopen to traffic prior to the end of the WMATA station closure.
3. We heard community concerns about traffic and access, and a combination of factors meant that we could not make additional promises to adequately mitigate the community concerns that have been raised.

PROJECT OBJECTIVE

This project involves the reconstruction of the existing three-span Monroe Street NE bridge over the CSX and WMATA railroad tracks, as well as the Brookland-CUA Metro Station and associated roadway improvement, including the addition of two bike lanes and improved traffic flow.

PROJECT IMPROVEMENTS

- Bridge reconstruction
- Dedicated bike lanes
- Improved greenway condition
- ADA bridge accessibility
- ADA compliant sidewalks and crosswalks
- New Curb & gutter
- New street lighting
- Traffic signal construction
- Removal of overhead power lines – relocated underground for ADA compliance
- Storm water catch basins
- Landscaping

QUESTIONS AND CONCERNS

Stacey Hemby: stacey@tbaconnects.com

Project Email: info@monroestreetbridge.org

www.monroestreetbridge.org