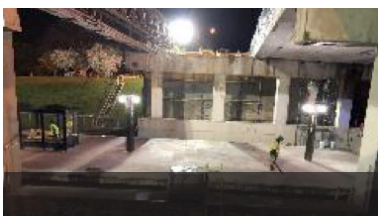
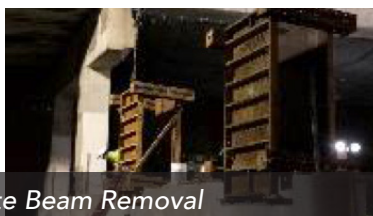


Reconstruction of Monroe Street NE Bridge

Spring 2018 Update



Pier and Concrete Beam Removal



PROJECT UPDATE

Proposed Temporary Full Bridge Closure July 5th - August 31st

This bridge closure is part of a coordinated effort with the WMATA shut-down and to safely perform bridge demolition over the WMATA and CSX tracks. DDOT will provide detours and flaggers to direct vehicles, bicyclists and pedestrians safely around the construction zone.

We realize that this closure may cause some inconvenience to the neighboring community, and we sincerely apologize for this inconvenience.

The project team is working to complete the demolition phase as quickly and as safely as possible.

Thank you again for your patience and understanding, as we reconstruct a safer Monroe Street NE Bridge.

PROJECT OBJECTIVE

This project involves the reconstruction of the existing three-span Monroe Street NE bridge over the CSX and WMATA railroad tracks, as well as the Brookland-CUA Metro Station and associated roadway improvement, including the addition of two bike lanes and improved traffic flow.

PROJECT IMPROVEMENTS

- Bridge reconstruction
- Dedicated bike lanes
- Improved greenway condition
- ADA bridge accessibility
- ADA compliant sidewalks and crosswalks
- New Curb & gutter
- New street lighting
- Traffic signal construction
- Removal of overhead power lines – relocated underground for ADA compliance
- Storm water catch basins
- Landscaping

QUESTIONS AND CONCERNS

Stacey Hemby: stacee@tbaconnects.com

Project Email: info@monroestreetbridge.org

www.monroestreetbridge.org