



# Reconstruction of Monroe Street NE Bridge Project Update



June 4, 2018

# Project Background

- The project consists of the reconstruction of Monroe Street NE Bridge over CSX and WMATA tracks & Brookland-CUA Metro Station
- Bridge is approximately 122 feet long and 66 feet wide
- Bridge has severely deteriorated superstructure and it will be replaced with a new superstructure
- New traffic signal at 8<sup>th</sup> Street and Monroe Street



# Project Improvements

- Bridge reconstruction
- ADA compliant sidewalks and crosswalks
- New curb & gutter
- New street lighting
- Traffic signal at 8<sup>th</sup> and Monroe
- Removal of overhead power lines – relocated underground for ADA compliance
- Landscaping



# Project Update

**There will NOT be a full multi-week closure of the bridge this summer.**

Here's Why:

- 1) We have been unable to secure CSX flagging to allow us to work 24/7.
- 2) We will accelerate the work with a 12 hour schedule, but would not be able to complete the north side of the bridge and reopen to traffic prior to the end of the WMATA station closure.
- 3) We heard community concerns about traffic and access, and a combination of factors meant that we could not make additional promises to adequately mitigate the community concerns that have been raised.

*DDOT thanks you for your engagement over the past several weeks and your patience while we reconstruct Monroe Street NE Bridge*

# Progress to Date



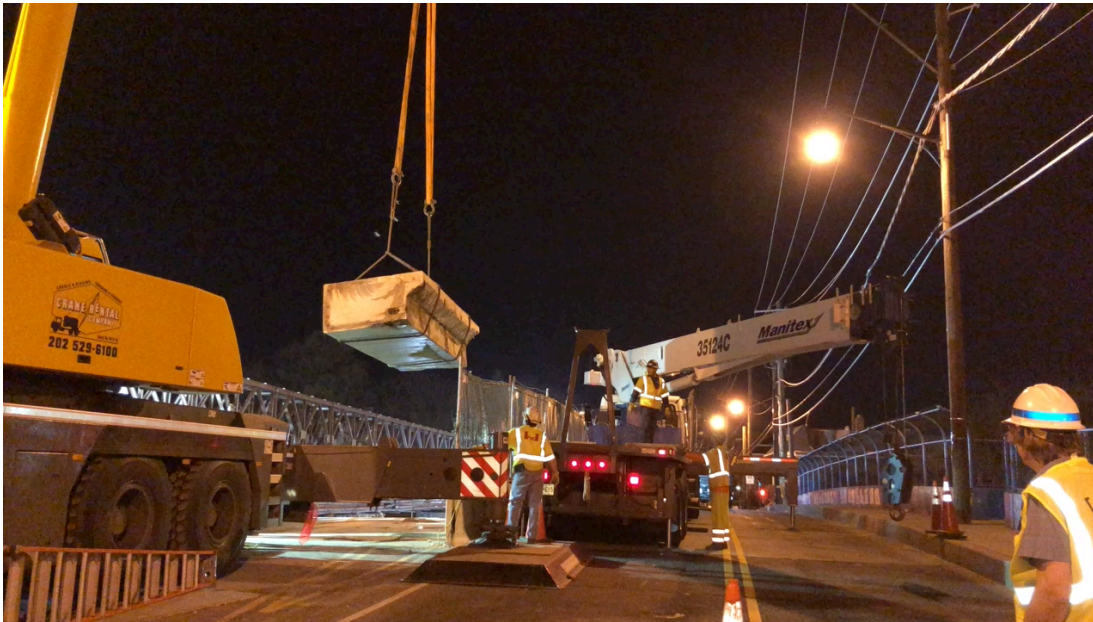
Concrete Beam Removal - Day



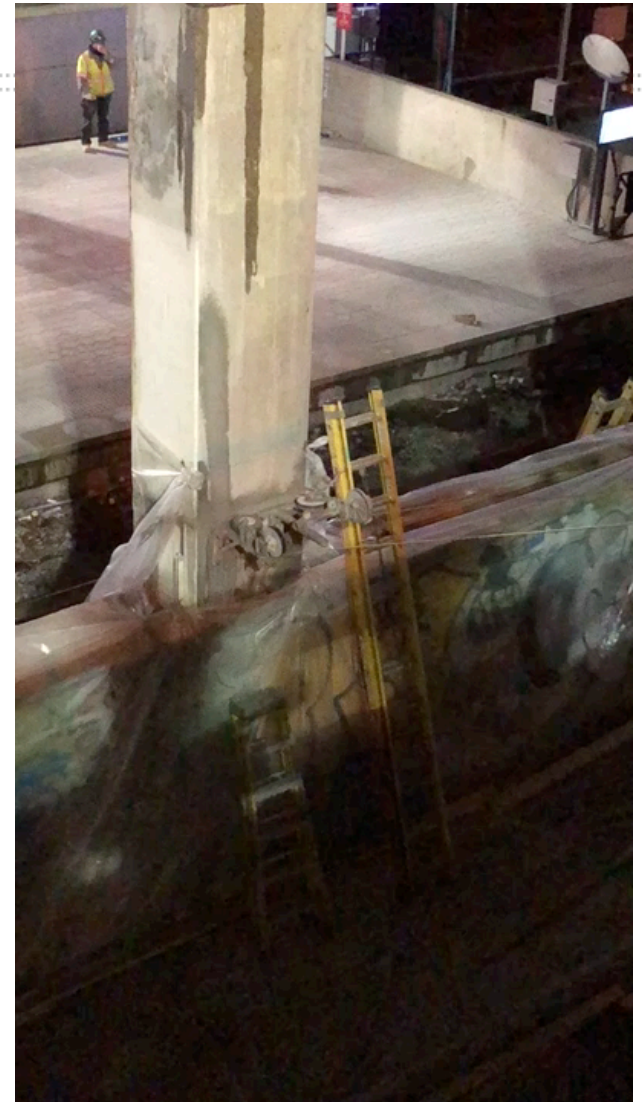
Concrete Beam Removal - Night



# Progress to Date



Pier Cap Removal - Night



Pier Removal - Night

# Anticipated Summer Work Plan

## **Summer Work plan:**

- Crews will work 12 hour shifts
  - we anticipate being able to shift most work from night-time to daytime work, pending CSX scheduling

## **Phase One during WMATA Shutdown:**

- Utility relocation
- Steel girder installation
- Pour concrete deck

## **Other Items**


- Exploring interim installation of traffic signal

# Coordination with WMATA and DC Water

## **WMATA**

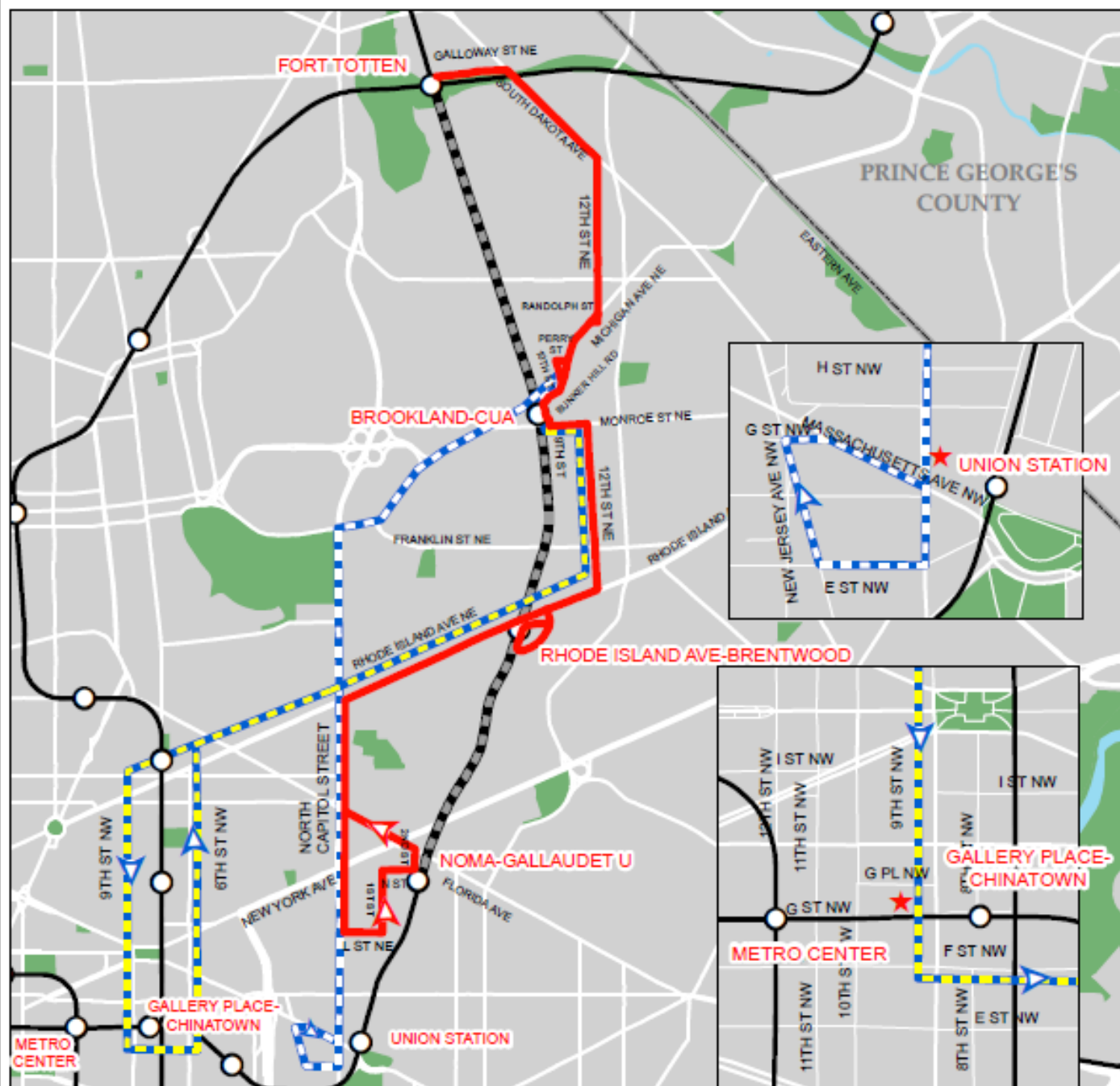
- Brookland and Rhode Island Avenue Station will be closed July 21 through September 5
- DDOT and WMATA Coordinating Bus Transit Alternatives similar to those provided during “Surge 10” in November 2016

## **DC WATER**

- DC Water beginning Northeast Boundary Tunnel construction
  - Traffic changes will not affect Rhode Island Avenue during Red Line closure
- 



# Red Line Segment Shutdown Fort Totten - NoMa Shuttle Routing July 21- Sept 3, 2018



## Legend

- Station Shuttle
- - - Brookland - Union Station
- - - Brookland - Metro Center
- Rail Shutdown Zone
- Rail Lines
- ★ Downtown Shuttle stops



0 0.275 0.55  
Miles

# Questions

